

SUPPLEMENTAL / BID BULLETIN

ADDENDUM NO. 20-01

“Supply and Delivery of 6,500 pieces Water Meter 1/2” (15mm ND), 20 pieces Water Meter 3/4” (19mm ND) and 20 pieces Water Meter 1” (25mm ND) - (PR#19-11-1302)”

This Addendum No. 20-01 dated January 24, 2020 is issued to clarify, modify or amend items in the Bidding Documents, which shall form an integral part thereof:

ISSUES	CLARIFICATIONS / AMENDMENTS
<p>SECTION I. INVITATION TO BID – page 3</p> <p>Supply and Delivery of 6,500 pieces Water Meter 1/2” (15mm ND), 20 pieces Water Meter 3/4” (19mm ND) and 20 pieces Water Meter 1” (25mm ND)</p> <p>a) Section I. Invitation to Bid – Description- (pg. 3) b) Section III. Bid Data Sheet (ITB Clause 1.1; 1.2 & 2) – page 33 c) Section VI. - Schedule of Requirements – page 55 d) Section VII. - Technical Specifications – page 56 e) Section VIII – Bidding Forms <ul style="list-style-type: none"> • Annex A – page 62 • Annex A-1 – page 64 f) Bidding Checklist – page 73</p>	<p>SECTION I. INVITATION TO BID – page 3</p> <p>Supply and Delivery of 6,500 pieces Water Meter 1/2” (15mm ND), 20 pieces Water Meter 3/4” (19mm ND) and 20 pieces Water Meter 1” (25mm ND) with Tailpiece</p> <p>Note: All items stated below will have the same description us above.</p> <p>a) Section I. Invitation to Bid – Description- (pg. 3) b) Section III. Bid Data Sheet (ITB Clause 1.1; 1.2 & 2) – page 33 c) Section VI. - Schedule of Requirements – page 55 d) Section VII. - Technical Specifications – page 56 e) Section VIII – Bidding Forms <ul style="list-style-type: none"> • Annex A – page 62 • Annex A-1 – page 64 f) Bidding Checklist – page 73</p>
<p>Section VII. Technical Specifications – page 56</p> <p>4. Meter Body:</p> <ul style="list-style-type: none"> • Copper alloy containing not less than 75% copper or Copper Alloy containing not less than 57% copper but with anti-corrosion treatment • Shall submit 2020 Certification from DOST-MIRDC material testing laboratory <p>8. Metrological Characteristics: page 57 Water Meter 3/4”:</p> <p>a. Maximum Flowrate (Qmax) = 3.0m³/h allowance error in accuracy ± 2% b. Nominal Flowrate (Qn) = 1.6m³/h allowance error in accuracy ± 2% c. Transitional Flowrate (Qt) = 0.051m³/hr allowance error in accuracy ± 2% d. Minimum Flowrate (Qmin) = 3.125m³/ - 5m³/hr allowance error in accuracy ± 5%</p>	<p>Section VII. Technical Specifications – page 56</p> <p>4. Meter Body:</p> <ul style="list-style-type: none"> • Copper alloy containing not less than 75% copper or Copper Alloy containing not less than 57% copper but with anti-corrosion treatment • Shall submit 2019 Certification from DOST-MIRDC material testing laboratory during the bid opening but required to submit the 2020 Certification during the post-qualification evaluation. <p>8. Metrological Characteristics: page 57 Water Meter 3/4”:</p> <p>a. Maximum Flowrate (Qmax) = 3.125 - 5m³/h allowance error in accuracy ± 2% b. Nominal Flowrate (Qn) = 2.5 - 4m³/h allowance error in accuracy ± 2% c. Transitional Flowrate (Qt) = 0.80 -1.102m³/hr allowance error in accuracy ± 2% d. Minimum Flowrate (Qmin) = 0.050 – 0.063m³/hr allowance error in accuracy ± 5%</p>

Water Meter 1" – page 58

- a. Maximum Flowrate (Qmax) = 3.0m³/h allowance error in accuracy ± 2%
- b. Nominal Flowrate (Qn) = 1.6m³/h allowance error in accuracy ± 2%
- c. Transitional Flowrate (Qmin) = 0.051m³/hr allowance error in accuracy ± 2%
- d. Minimum Flowrate (Qmin) = 5-7 .875 m³/hr allowance error in accuracy ± 5%

12. Meter/Serial Number (SN) – page 58

SN or Meter Number shall be unique or no duplication in every meter.

SN or Meter Number shall be engraved (laser) in **Big, Bold and Block Type Font** with font height min. of 7mm & max of 10mm. (For verification upon delivery). See enclosed picture for reference.

Note: No picture has been attached

SN or Meter Number will appear on the external top surface of the register cover ring and should be permanent.

- SN: for 1/2" = 20-22817
- SN: for 3/4" = 20-0018
- SN: for 1" = 20-015

16. Warranty: page 59

All water meters shall be guaranteed against defects in workmanship and materials for a period of one (1) year from the date of acceptance. Discovered defective meters shall be replaced, with result of each calibrations, within thirty (30) calendar days without charge upon return to the manufacturer/supplier.

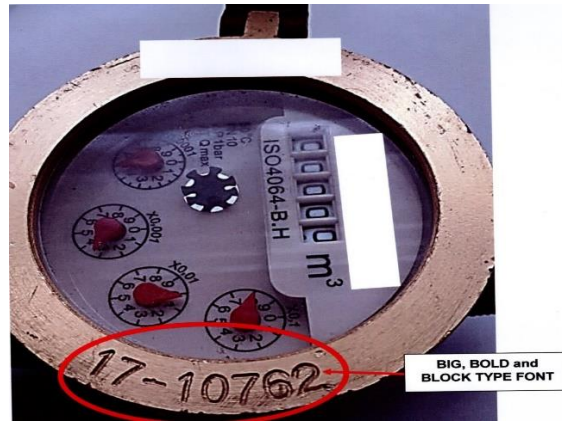
Water Meter 1" – page 58

- a. **Minimum** Flowrate (Qmax) = **0.079 - 0.080**m³/h allowance error in accuracy ± 2%
- b. Nominal Flowrate (Qn) = **4 – 6.3**m³/h allowance error in accuracy ± 2%
- c. Transitional Flowrate (Qmin) = **0.126 - 0.128**m³/hr allowance error in accuracy ± 2%
- d. **Maximum** Flowrate (Qmin) = 5 - 7 .875m³/hr allowance error in accuracy ± 5%

12. Meter/Serial Number (SN) – page 58

SN or Meter Number shall be unique or no duplication in every meter.

SN or Meter Number shall be engraved (laser) in **Big, Bold and Block Type Font** with font height min. of 7mm & max of 10mm. (For verification upon delivery). **See picture below for reference.**



SN or Meter Number will appear on the external top surface of the register cover ring and should be permanent.

- SN: for 1/2" = 20-22817 **to 20-29316**
- SN: for 3/4" = 20-0018 **to 20-0037**
- SN: for 1" = 20-015 **to 20-034**

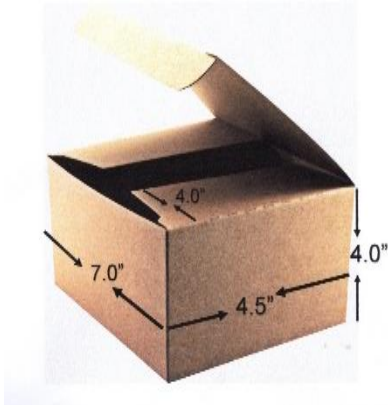
16. Warranty: page 59

All water meters shall be guaranteed against defects in workmanship and materials for a period of one **and a half (1½)** year from the date of acceptance. Discovered defective meters shall be replaced, with result of each calibrations, within thirty (30) calendar days without charge upon return to the manufacturer/supplier.

17. Packaging: page 59
Water Meter for 15mm

Specifications:

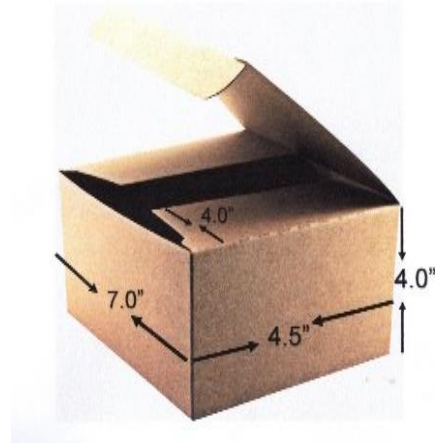
1. Corrugated Fiberboard Box
2. Single Wall 3 Ply (Double Face)/C Flute (4.00-4.7mm)
3. 200#/32 ECT (Edge Crush Test) Grade for standard stacking performance
4. Dimension 7" x 4.5" x 4" (L x W x H)
5. Color – Kraft



Note: Description of dimension is not readable in the bid documents posted in the PhilGEPS

17. Packaging: page 59
Water Meter for 1/2" (15mm ND)
Specifications:

1. Corrugated Fiberboard Box
2. Single Wall 3 Ply (Double Face)/ C Flute (4.00-4.7mm)
3. 200#/ 32 ECT (Edge Crush Test) Grade for standard stacking performance
4. Dimension: 7" x 4.5" x 4" (L x W x H)
5. Color – Kraft



For guidance and information of all concerned.

signed

JOCELYN A. PLAZOS
BAC Vice-Chairperson

Received by the Bidder: _____

Date: _____